

Technical data sheet

Product features



High-capacity boiling kettle gas indirect 200 l

Model	SAP Code	00019666
BIQ 90/100 200 G	A group of articles - web	Boiling kettles



- Device type: Gas unit
- Device heating type: Indirect
- Ignition: Electric
- Steam pressure regulation: Automatic - the pressure switch regulates the performance of the device
- Filling: Mechanical cock
- Jacket filling: Semi-automatic
- Drain valve diameter: 2"
- Basin dimensions [mm x mm x mm]: 760x540x440/490
- Basin volume [l]: 200
- Usable volume [l]: 183

SAP Code	00019666	Power gas [kW]	24.000
Net Width [mm]	1000	Type of gas	Natural gas, propane butane
Net Depth [mm]	928	Basin volume [l]	200
Net Height [mm]	900	Usable volume [l]	183
Net Weight [kg]	193.00	Basin dimensions [mm x mm x mm]	760x540x440/490
Power electric [kW]	0.023	Device heating type	Indirect
Loading	230 V / 1N - 50 Hz	Steam pressure regulation	Automatic - the pressure switch regulates the performance of the device

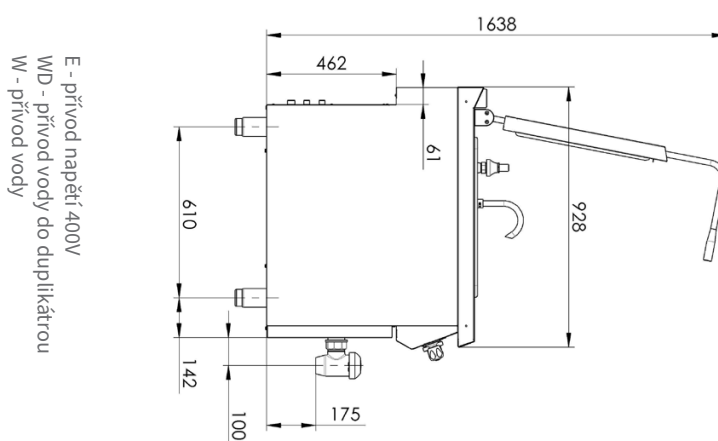
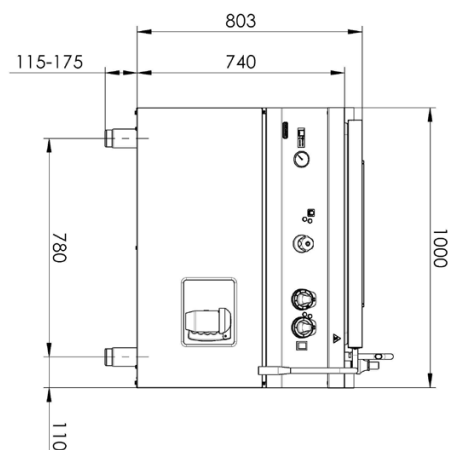
Technical data sheet

Technical drawing

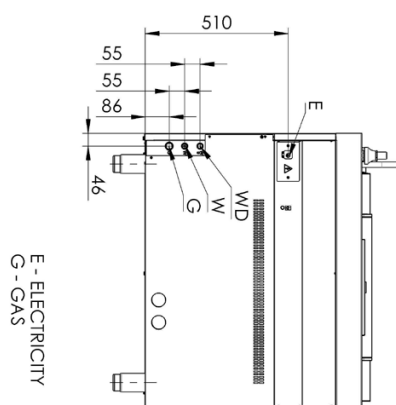


High-capacity boiling kettle gas indirect 200 l

Model	SAP Code	00019666
BIQ 90/100 200 G	A group of articles - web	Boiling kettles



E - přívod napětí 400V
WD - přívod vody do duplikátů
W - přívod vody



E - ELECTRICITY
G - GAS

Technical data sheet



Product benefits

High-capacity boiling kettle gas indirect 200 l

Model	SAP Code	00019666
BIQ 90/100 200 G	A group of articles - web	Boiling kettles

1

Top cover in front panel design

thanks to the design, the lines of the front panel and the lid are unified, the designed design allows easy maintenance by the user

2

Ergonomic extended handle

even people of smaller stature can comfortably lift the lid to the fully open state

3

Sloped bottom for the sink

the entire volume of the container will flow out without the need to carry the food to the sink

4

Reinforced bottom without deformations

thanks to the reinforcements in the intermediate shell, the service life of the duplicator is extended, there is no deformation due to heat and expansion of the material

5

Spill-resistant design controls

ergonomically comfortable, preventing water from entering the device

6

Lines in the container

the operator knows at a glance how much food is inside the cooking vessel

7

Duplicator automatic venting

thanks to the integrated pressure switch, the pressure in the intermediate casing is automatically regulated

8

Rotatable filling arm

convenient filling of the duplicator container, the hanger is used for maintenance and cleaning of the cooking container

9

Integrated waste overflow

condensed water drains directly from the top plate

10

Molded top plate

easier operation and cleanability, water does not flow over the edge on controls and service the top plate retains its stiffness without deformation over time due to use

11

Integrated waste overflow

the operator can check the pressure in the intermediate casing

12

A pre-prescribed upper lid with a lifting mechanism

lid holds open in different positions

Technical data sheet

Technical parameters



High-capacity boiling kettle gas indirect 200 l

Model	SAP Code	00019666
BIQ 90/100 200 G	A group of articles - web	Boiling kettles

1. SAP Code:

00019666

2. Net Width [mm]:

1000

3. Net Depth [mm]:

928

4. Net Height [mm]:

900

5. Net Weight [kg]:

193.00

6. Gross Width [mm]:

1035

7. Gross depth [mm]:

1030

8. Gross Height [mm]:

1085

9. Gross Weight [kg]:

201.00

10. Device type:

Gas unit

11. Construction type of device:

Stationary

12. Power electric [kW]:

0.023

13. Loading:

230 V / 1N - 50 Hz

14. Power gas [kW]:

24.000

15. Ignition:

Electric

16. Type of gas:

Natural gas, propane butane

17. Protection of controls:

IPX4

18. Exterior color of the device:

Stainless steel

19. Material:

AISI 304 top plate and cladding

20. Indicators:

operation and warm-up

21. Drain valve diameter:

2"

22. Worktop type:

Molded - comfortable cleaning maintenance

23. Worktop material:

AISI 304

24. Worktop Thickness [mm]:

2.00

25. Surface finish:

polished stainless steel

26. Device heating type:

Indirect

27. Basin volume [l]:

200

28. Basin dimensions [mm x mm x mm]:

760x540x440/490

Technical data sheet



Technical parameters

High-capacity boiling kettle gas indirect 200 l

Model	SAP Code	00019666
BIQ 90/100 200 G	A group of articles - web	Boiling kettles

29. Volume capacity of the container [l]:

200.00

30. Maximum device temperature [°C]:

100

31. Power control type:

2

32. Service accessibility:

Trough the frontal panel

33. Safety element:

manometer
safety fitting
safety thermostat

34. Safety thermocouple:

Yes

35. Safety thermostat:

Yes

36. Adjustable feet:

Yes

37. Bottom thickness:

2.50

38. Bottom material:

AISI 316

39. Type of pan:

Fixed

40. Usable volume [l]:

183

41. Filling:

Mechanical cock

42. Jacket filling:

Semi-automatic

43. Basin shape:

Practically shaped bathtub spout to minimize spillage

44. Steam pressure regulation:

Automatic - the pressure switch regulates the performance of the device

45. Type of drain valve:

conical

46. Overflow:

Yes

47. Manometer:

Yes

48. Water filling type:

Cold

49. Connection to a ball valve:

1/2

50. Water supply connection:

1/2"